

Drop off and Pick arrangements from Week Commencing 28th September

Nursery Wednesday Morning Session

Drop Off	Pick Up
Main front gate and rear gate open at 8.45. Parents/carers leave through the <u>front</u> lower gate.	Rear gate <u>only</u> open at 11.25. Parents/carers leave via the <u>rear</u> gate.

Nursery Wednesday Afternoon Session

Drop Off	Pick Up
Rear gate <u>only</u> open at 12.25 Parents/carers leave via the rear gate.	Main front gate or rear gate, open at 2.55. Parents/carers leave through the <u>front</u> lower gate.

Year Group	Drop Off	Pick Up
Reception	Main front gate and rear gate open at 8.45. Parents/carers will have to leave through the <u>front</u> lower gate.	Main front gate or rear gate, open at 2.55. Parents/carers will have to leave through the <u>front</u> lower gate.
Year 1	Main front gate and rear gate open at 8.45. Parents/carers will have to leave through the <u>front</u> lower gate.	Main front gate or rear gate, open at 2.55. Parents/carers to leave through the <u>front</u> lower gate.
Year 2	Main front gate <u>only</u> open at 8.45. Parents/carers to leave through the front lower gate.	Main front gate <u>only</u> open at 2.55. Parents/carers will have to leave through the front lower gate.
Year 3	Main front gate or rear gate open at 8.45. Parents/carers will have to leave through the <u>front</u> lower gate.	Main front gate or rear gate , open at 2.55. Parents/carers can leave through the front lower gate or the rear gate
Year 4	Main front gate <u>only</u> open at 8.45. Parents/carers will have to leave through the front lower gate.	Main front gate <u>only</u> open at 2.55. Parents/carers can leave through the main gate, front lower gate or rear gate .
Year 5	Main front gate <u>only</u> open at 8.45. Parents/carers will have to leave through the front lower gate.	Main front gate <u>only</u> open at 2.55. Parents/carers will have to leave through the front lower gate.
Year 6	Main front gate <u>only</u> open at 8.45. Parents/carers will have to leave through the front lower gate.	Main front gate <u>only</u> open at 2.55. Parents/carers will have to leave through the front lower gate.

WEDNESDAY AM Nursery

- 8:45-9am Drop off Only (Exit via front lower gate)
- 11:25am Pick up and parent/carer exit

WEDNESDAY PM Nursery

- 12:25pm Drop off and parent/carer exit

Optional Entry for Drop Off: 8:45-9am:

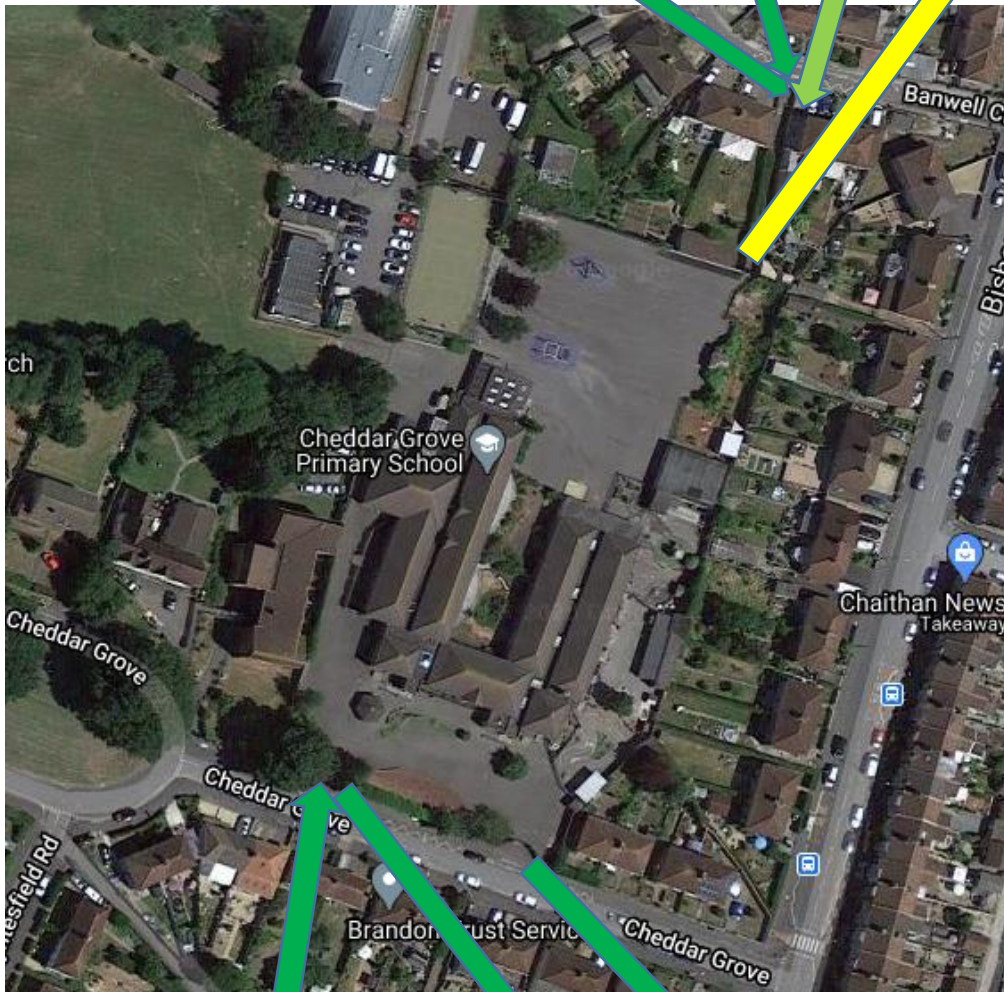
- Nursery (Mon, Tues, Thurs & Fri), Reception, Year 1 & Year 3

Optional Entry for Pick Up:

- 2:55pm – Nursery (Mon, Tues, Thurs & Fri) Reception & Year 1
- 3:20pm - Year 3 & Year 4

Optional PM EXIT FOR:

Year 3 & Year 4 **ONLY**



ENTRY for Drop Off 8:45-9am:

- Year 2, 4, 5 & 6
- Optional - Reception, Yr 1 & Yr 3, Nursery (Mon, Tues, Thurs & Fri)

ENTRY for Pick Up:

- 2:55pm - Reception – Year 2, Nursery (Mon, Tues, Thurs & Fri)
- 3:15pm – Year 4 - Year 6
- Optional - Year 3

Year 4 ONLY
Optional Exit

EXIT Lower Front Gate:

- Wednesday AM Nursery Drop off exit
- Reception – Year 6